

# Dual-element Normal Probe



## Application:

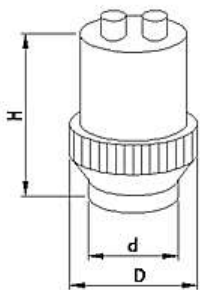
Mainly used for testing defects parallel to or slightly tilted against the test surface (e.g. steel plate);  
Much more appropriate for detecting near surface flaws than normal probes.

## Ordering Information:

### TR2.5-14-30L

Series Code | Frequency | Crystal dimension  $\Phi 14$  | Connector Type | Focal Length

\* Side connector is available.  
(Please specify when order)



Series Code	Crystal Size (mm)	D	d	H
TR/TRM	$\Phi 10/7 \times 10$	$\Phi 28$	$\Phi 14.5$	40
	$\Phi 14/10 \times 10$	$\Phi 28$	$\Phi 19.6$	36.5
	$\Phi 20/14 \times 18/12 \times 20$	$\Phi 31$	$\Phi 25.5$	40.5
	$\Phi 24/20 \times 20$	$\Phi 35$	$\Phi 29$	47

\* TR probes with membrane is also available.

## Narrow Frequency Bandwidth Series

Series Code	Frequency (MHz)	Crystal Size (mm)	Focal Length (mm)	Connector Type
TR	2/2.25/2.5	$\Phi 10$	None, 10	L: LEMO 00 MD: Microdot
		$\Phi 14, \Phi 20, \Phi 24$	None, 10, 20, 30	
		$14 \times 18, 12 \times 20, 10 \times 10, 20 \times 20$	None, 10, 20	
	4/5	$\Phi 10$	None, 10, 20	
		$\Phi 14, \Phi 20, \Phi 24$	None, 10, 20, 30	
		$7 \times 10$	None, 10, 15	

## Wide Frequency Bandwidth Series

Series Code	Frequency (MHz)	Crystal Size (mm)	Focal Length (mm)	Connector Type
TRM	2/2.25/2.5	$\Phi 10$	None, 10	L: LEMO 00 MD: Microdot
		$\Phi 14, \Phi 20, \Phi 24$	None, 10, 20, 30	
		$14 \times 18, 12 \times 20$	None, 10, 20	
	4/5	$\Phi 10$	None, 10, 20	
		$\Phi 14, \Phi 20, \Phi 24$	None, 10, 20, 30	
		$7 \times 10, 10 \times 10, 20 \times 20$	None, 10, 15	

\* All crystal sizes is for twin-element crystals.